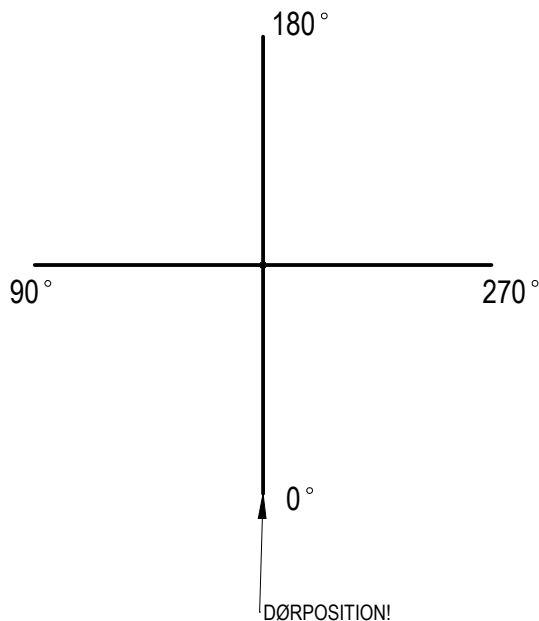
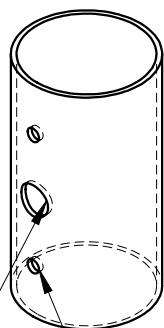


ARMATURORIENTERING



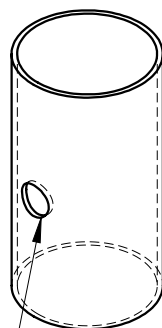
F1



Ø 20 Kabelhul

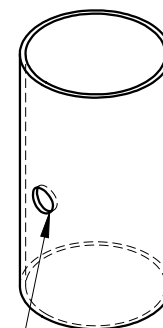
2x Tråd hul

F2

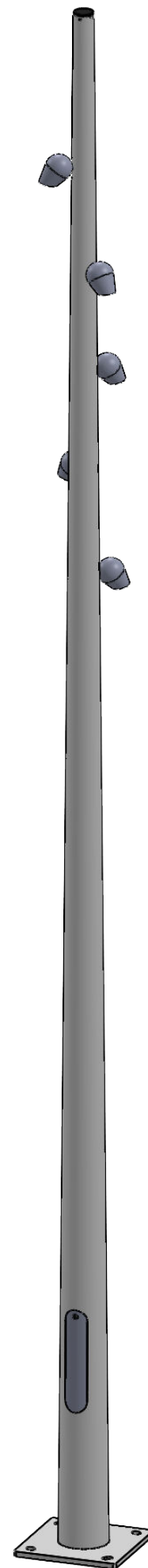


Ø 20 Kabelhul

F3



G Tråd hul



Stanghøjde(H) =

* - HVIS MERE END 1 ARMATUR PÅ SAMME NIVEAU.

Armaturplacering på stangen

Niveau	Afstand fra toppen, mm	1st armatur.* placering 0°-360°	2nd armatur.* placering 0°-360°	3rd armatur.* placering 0°-360°
L1				
L2				
L3				
L4				
L5				
L6				