

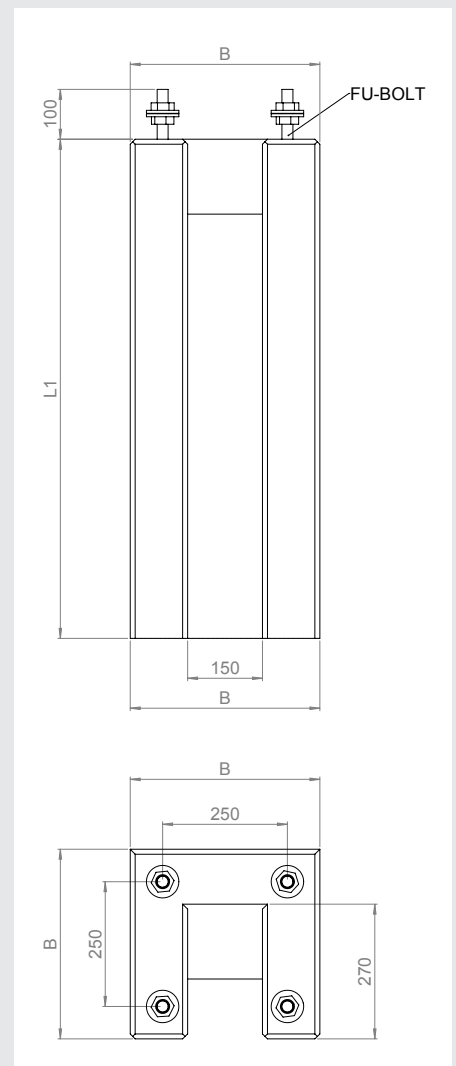
PREFABRICATED FOUNDATIONS

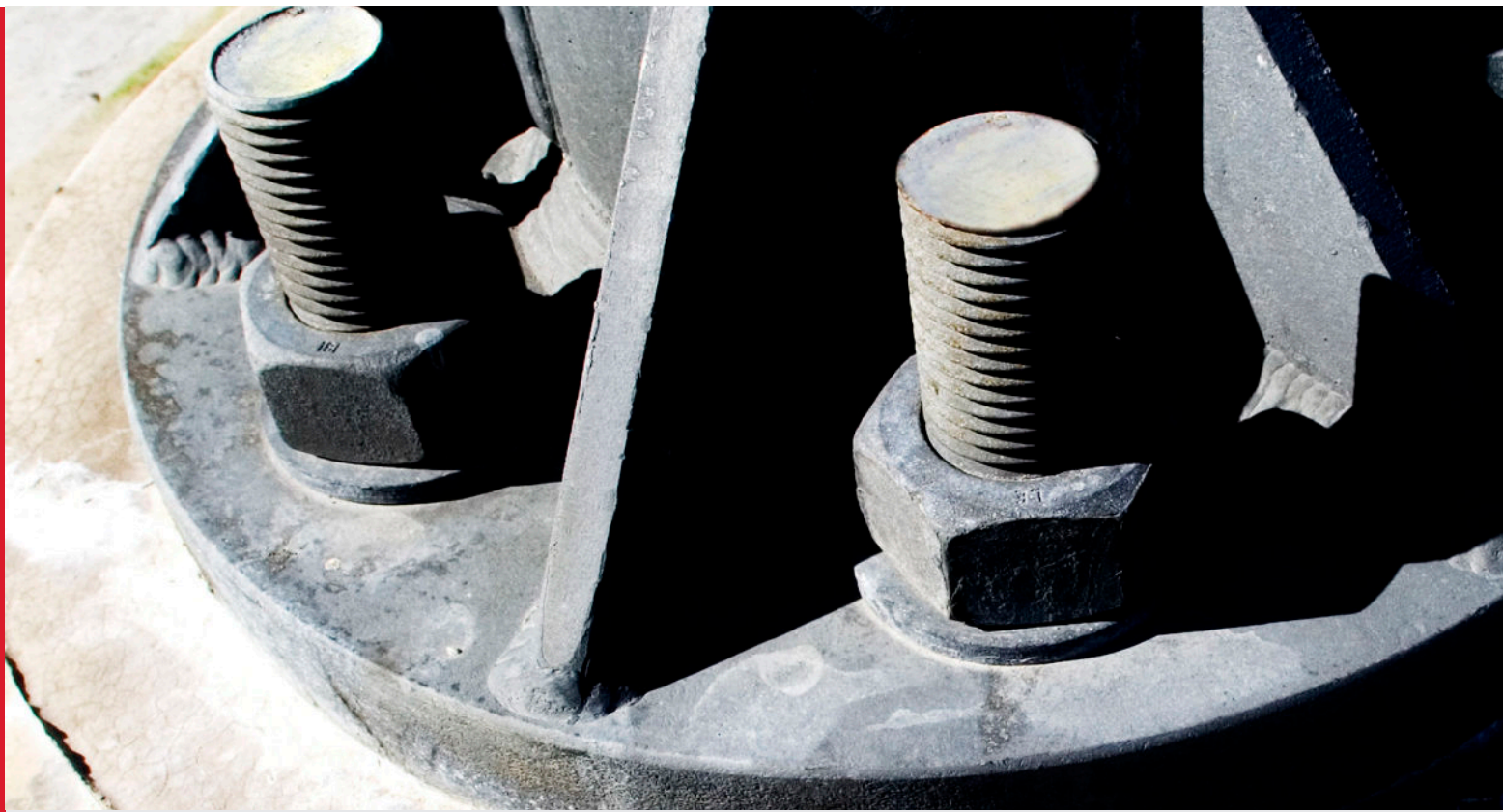
Description/Material

Prefabricated concrete foundations with 4 cast-in bolts for pipe masts with foot flange.

Type 1 - Prefabricated concrete foundations for pipe poles with foot flange.

| Item nr. | L1 | A1 | A2 | B | Fu-bolt | Weight |
|----------|------|-----|-----|-----|---------|--------|
| | mm | mm | mm | mm | mm | kg |
| 50609070 | 1000 | 250 | 250 | 380 | | 336,2 |
| 50609080 | 1300 | 250 | 250 | 380 | M20 | 425 |
| 50609090 | 1600 | 250 | 250 | 380 | M22 | 530 |
| 50609100 | 1600 | 250 | 250 | 485 | M22 | 925 |
| 50609140 | 750 | 250 | 250 | 380 | M20 | 186 |





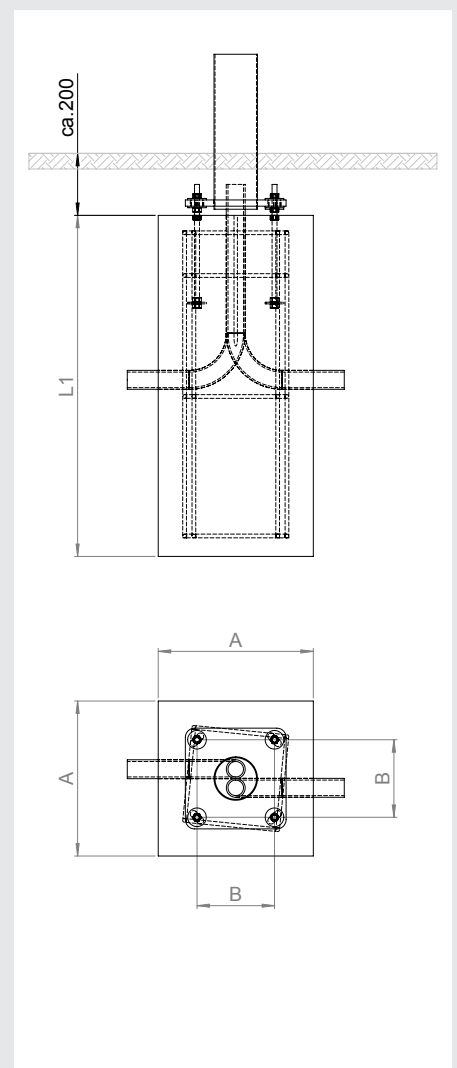
PREFABRICATED FOUNDATIONS

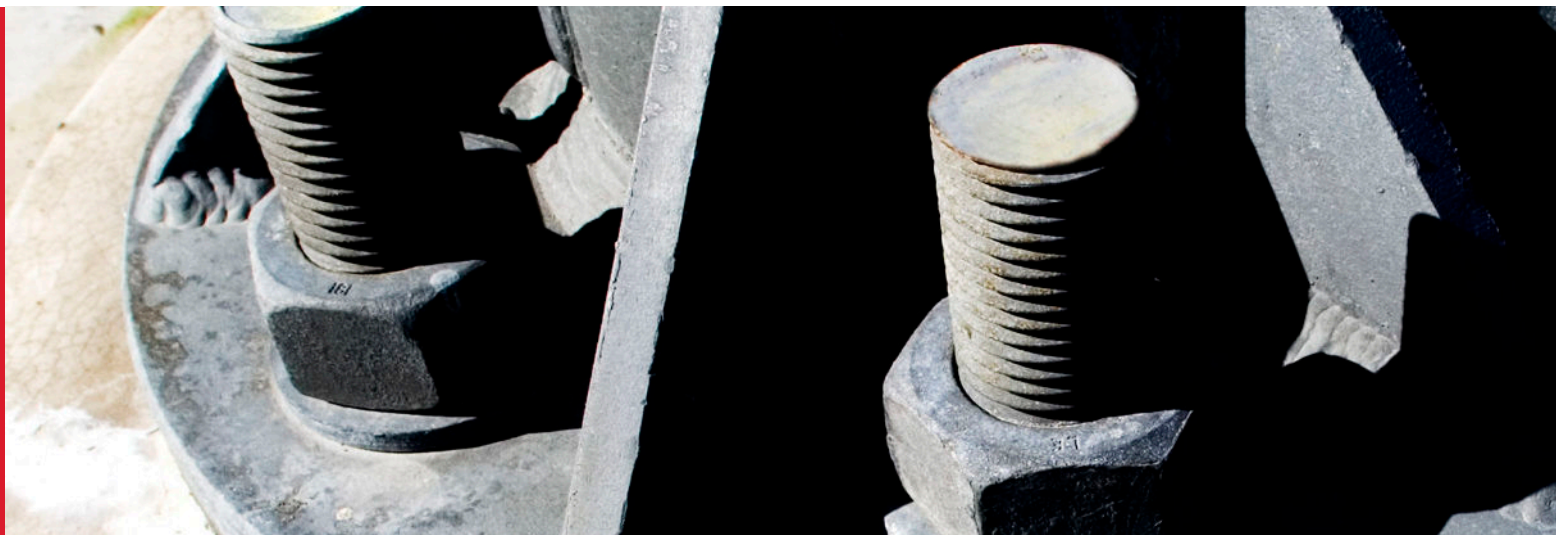
Description/Material

Præfabrikerede betonfundamenter med 4 indstøbte bolte til rørmaster med fodflange.

Type 2 - Præfabrikerede betonfundamenter Til rørmaster med fodflange

| Item nr. | L1 | A1 | A2 | B | Fu-bolt | Weight |
|----------|------|-----|-----|-----|---------|--------|
| | mm | mm | mm | mm | mm | kg |
| 50460445 | 1300 | 250 | 250 | 500 | M20 A4 | 780 |
| 50609098 | 2400 | 300 | 300 | 500 | M24 A4 | 1453 |
| 90039639 | 1100 | 90 | 200 | 380 | M16 | 252 |



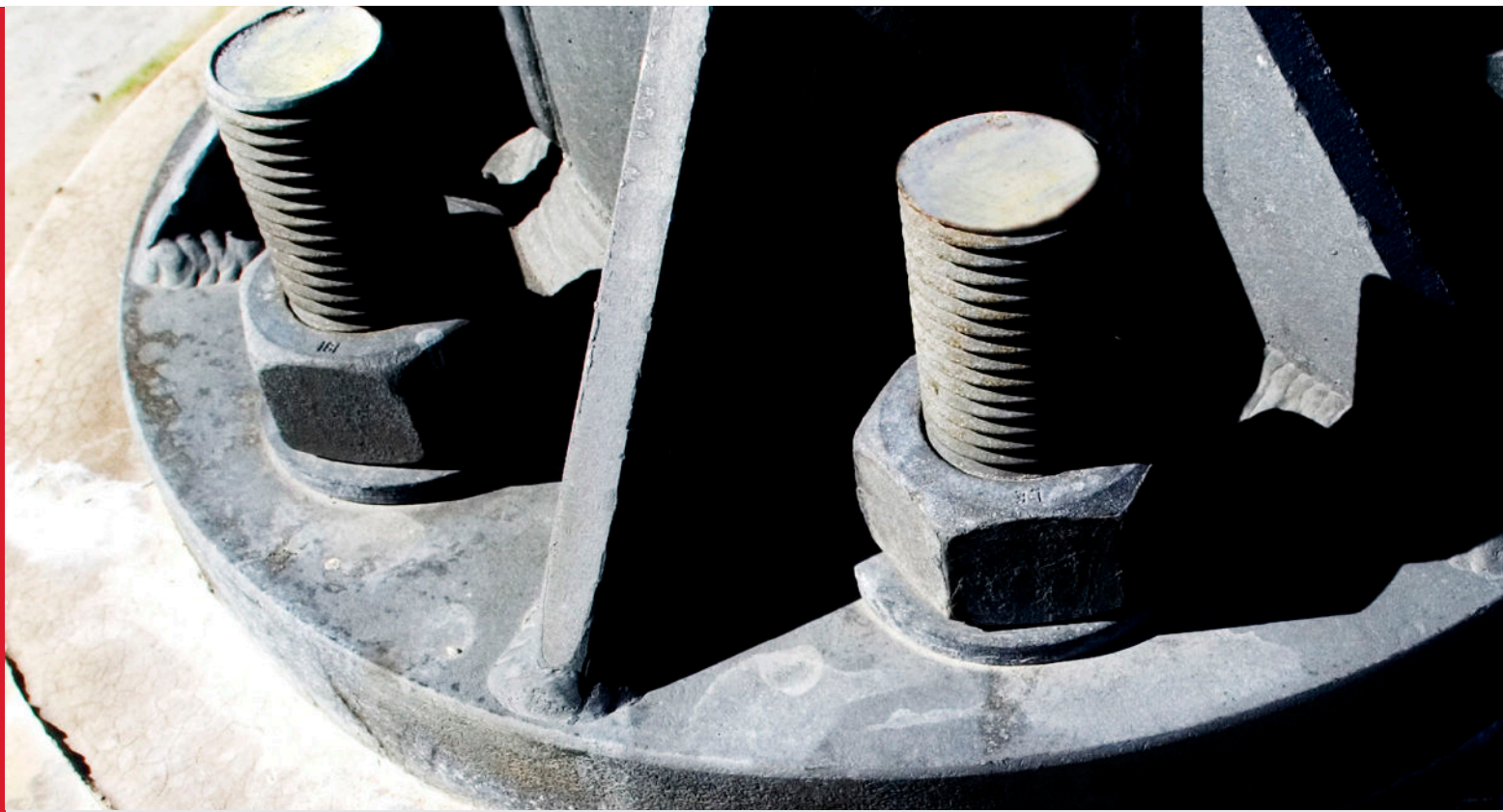


PREFABRICATED FOUNDATIONS

Tightening torques for bolts. Torque wrench max +/- 5% deviation

| Quality | 8.8 | S355 | S285 | S235 |
|-------------|-------|------|------|------|
| Surface | FZV | FZV | FZV | FZV |
| Lubrication | OLIE | OLIE | OLIE | OLIE |
| Friction | 0,14 | 0,14 | 0,14 | 0,14 |
| Screws ect | NM | NM | NM | NM |
| M10 | 50 | 28 | 22 | 18 |
| M12 | 87 | 48 | 39 | 32 |
| M14 | 137 | 76 | 61 | 50 |
| M16 | 211 | 117 | 94 | 77 |
| M18 | 294 | 159 | 131 | 103 |
| M20 | 412 | 222 | 183 | 145 |
| M22 | 554 | 299 | 247 | 195 |
| M24 | 712 | 384 | 317 | 250 |
| M27 | 1028 | 554 | 458 | 362 |
| M30 | 1402 | 756 | 624 | 493 |
| M33 | 1894 | 1021 | 843 | 666 |
| M36 | 2440 | 1315 | 1086 | 858 |
| M39 | 31235 | 1690 | 1396 | 1102 |
| M42 | 3895 | 2039 | 1734 | 1308 |
| M45 | 4826 | 2526 | 2149 | 1621 |
| M48 | 5832 | 3052 | 2597 | 1959 |
| M52 | 7479 | 3915 | 3331 | 2513 |
| M56 | 9320 | 4878 | | 3131 |
| M60 | 11556 | 6049 | | 3882 |
| M64 | 14017 | 7118 | | 4709 |
| Sorsp. | 0,69 | 0,69 | 0,69 | 0,69 |

Kilde: Baskin D.09.1.2004



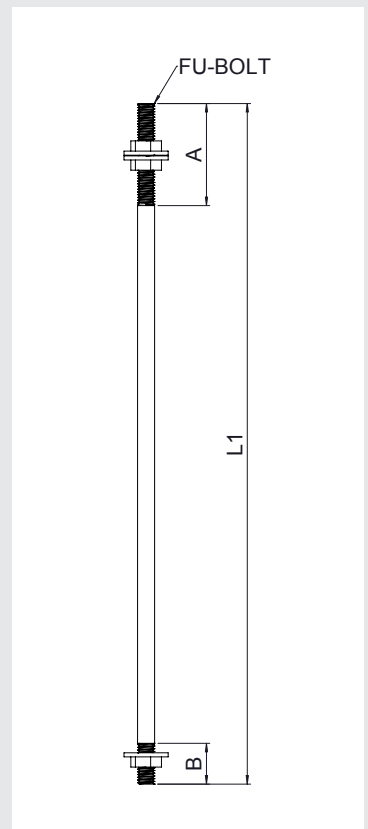
BOLTS FOR CAST FOUNDATIONS

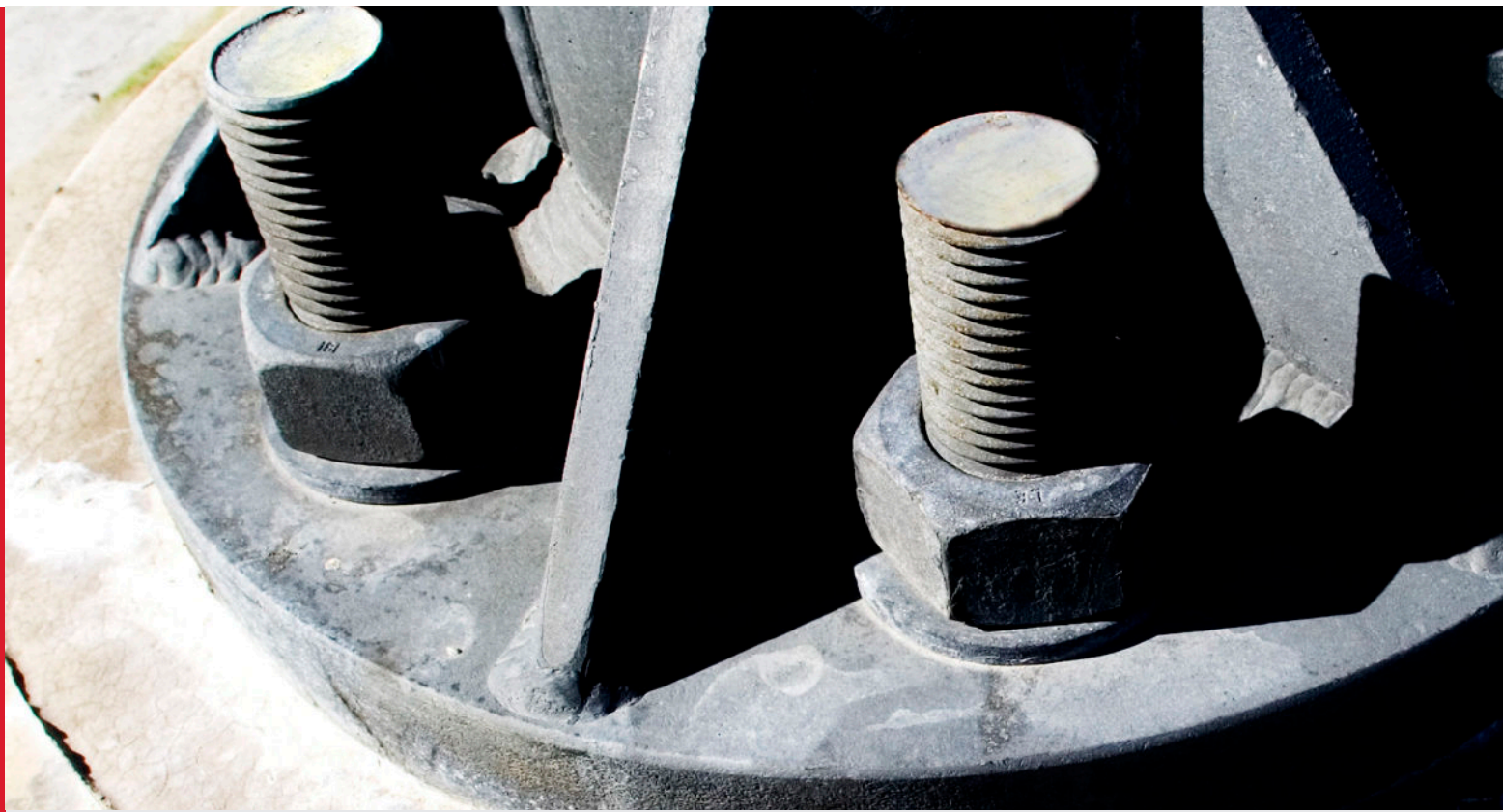
Description/Material

Foundation bolts for cast foundations.
Including nuts/washers.
Steel S355.

Foundation bolts for cast foundations.

| Varenr. | Fu-bolt | L1 | A | B | Max LPH | Weight |
|----------|---------|------|-----|----|---------|--------|
| | mm | mm | mm | mm | mm | kg |
| 62010013 | M20 | 1100 | 100 | 50 | 9000 | 3 |
| 62010012 | M22 | 1100 | 100 | 50 | 10000 | 4 |
| 62010011 | M24 | 1100 | 100 | 60 | 10500 | 5 |
| 62010010 | M27 | 1100 | 120 | 60 | 15500 | 6 |
| 62010016 | M33 | 1500 | 150 | 65 | 14500 | 10 |





CAST FOUNDATIONS

Cast foundation for pipe poles

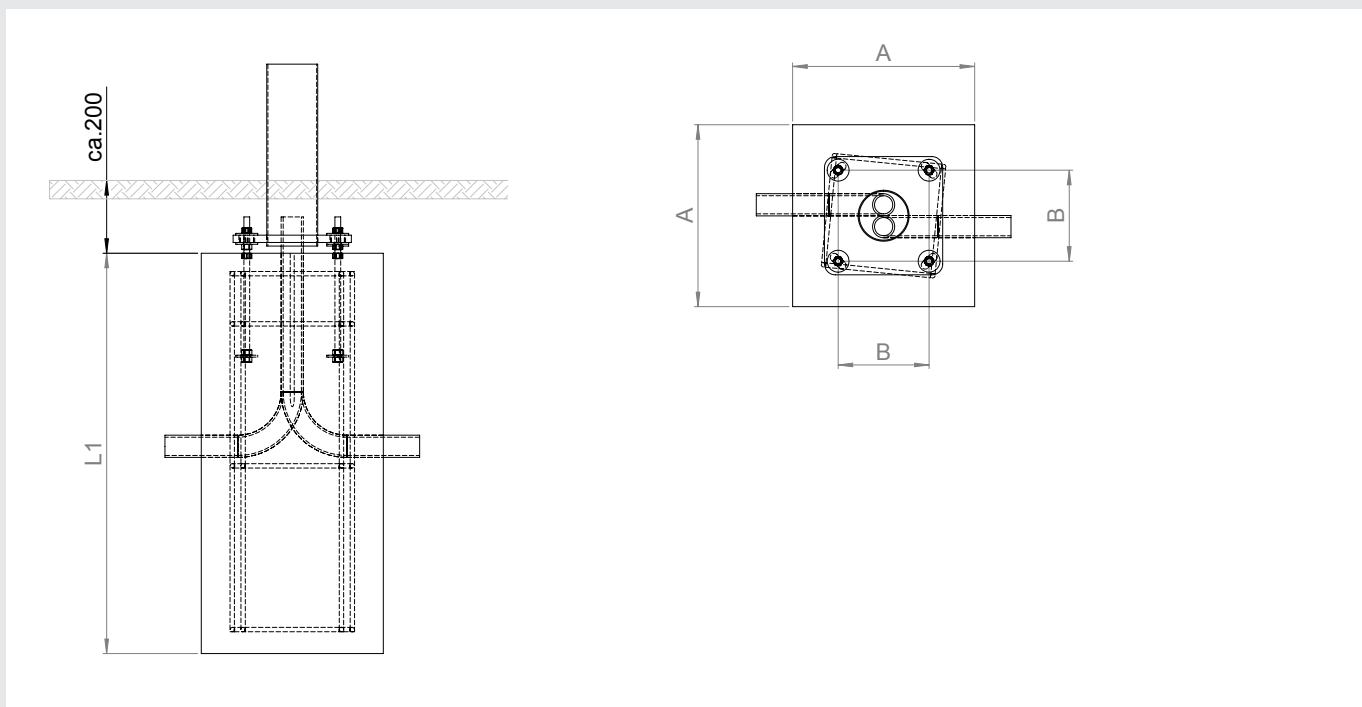
Guidance on casting foundations for pipe poles

1. The soil must not be inferior to medium firm or moist clay.
2. The foundation must be cast against soil in natural deposits.
3. The ground water must be below the underside of the foundations.
4. Concrete 20 MN/m²

Guidance for installing pipe poles on cast foundations

1. Install 1 nut on 1 washer on each foundation bolt.
2. Position the pole.
3. Fit 1 dowel and 1 washer to each foundation bolt.
4. Adjust the pole plumb before final tightening.

CAST FOUNDATIONS FOR PIPE POLES



Guide – dimensions for cast foundations

| Item nr. | Fu-bolt | L1 | A | B | MAX LPH |
|----------|---------|------|-----|-----|-----------|
| | MM | MM | MM | MM | MM |
| 62010013 | M20 | 1100 | 400 | 250 | 3000-7000 |
| 62010013 | M20 | 1200 | 400 | 250 | 8000 |
| 62010013 | M20 | 1300 | 450 | 250 | 9000 |
| 62010012 | M22 | 1400 | 500 | 250 | 10000 |
| 62010011 | M24 | 1400 | 500 | 250 | 10500 |
| 62010011 | M24 | 1400 | 550 | 250 | 11500 |
| 62010011 | M24 | 1500 | 550 | 250 | 12500 |
| 62010010 | M27 | 1500 | 550 | 250 | 13500 |
| 62010016 | M33 | 1500 | 700 | 250 | 14500 |