

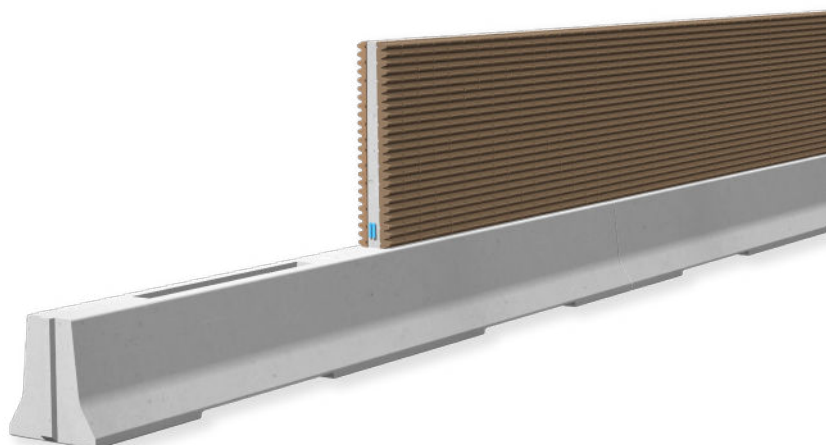
**REBLOC NB100H/300\_8**

Technical Datasheet

ASI C

**Precast Concrete  
Vehicle Restraint System**

**Integrated Noise Barrier  
Free standing**



NB100H/300\_8

**Technical data**

Containment level	<b>H3</b>
Working width	<b>W5 (<math>W_N \leq 1.7</math> m)</b>
Impact severity level	<b>ASI C</b>
Vehicle intrusion	<b>VI4 (<math>VI_N \leq 1.3</math> m)</b>
Airborne sound insulation $DL_{SI}$	<b>class D4 acc. to EN 1793-6 (in situ)</b>
Installation	<b>free standing on asphalt   concrete</b>
Application	<b>single-sided   double-sided</b>
Minimum installation length	<b>64 m (8 base elements, 7 panels)</b>
Initial/end anchorage	<b>not necessary, optional available</b>
Base element RNB100H_8	
Dimensions L x W x H in cm   Weight	<b>800 x 95 x 100 cm   approx. 9930 kg</b>
Concrete panel with absorber NB300H_8	
Dimensions L x W x H in cm   Weight	<b>800 x 38 x 280 cm   approx. 8800 kg</b>
Curve radius	<b><math>r \geq 200</math> m, smaller radii on request</b>
Coupling/exposed steel parts	<b>fully integrated, exposed parts hot-dip galvanized</b>
CE certification	<b>✓</b>
Miscellaneous	<b>Different materials, colors and creative designs are available as sound absorption material.</b>

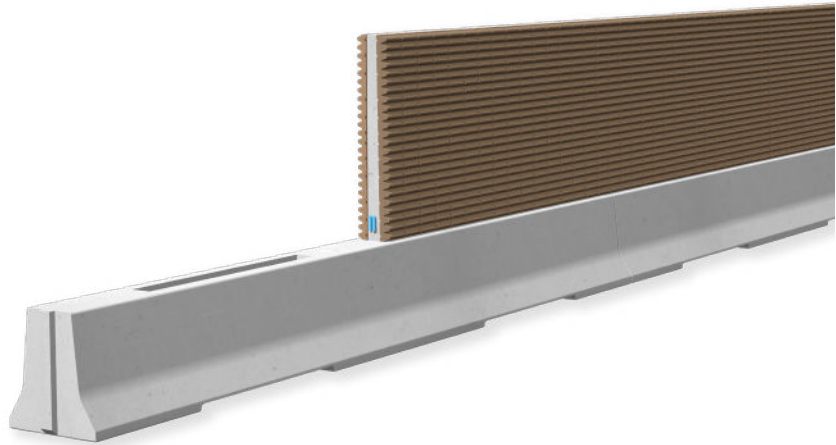
# REBLOC NB100H/300\_8

Technical Datasheet

ASI C

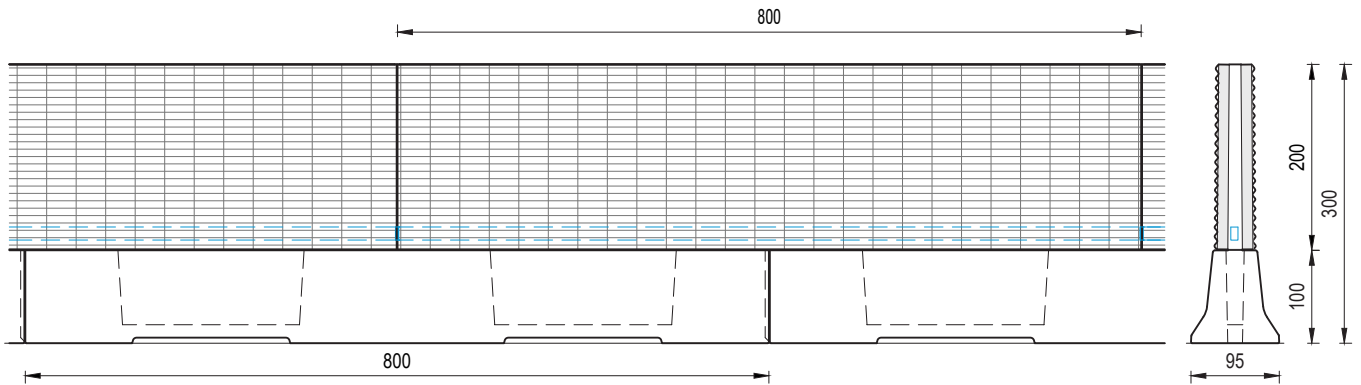
Precast Concrete  
Vehicle Restraint System

Integrated Noise Barrier  
Free standing



NB100H/300\_8

## Technical drawing



all dimensions in cm