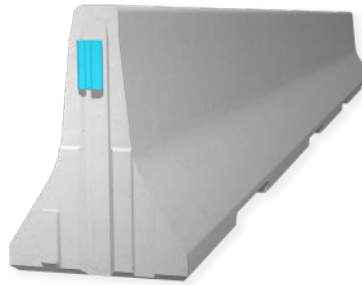


# REBLOC 80H\_8

## Technical Datasheet

ASI B

REBLOC 80H\_8

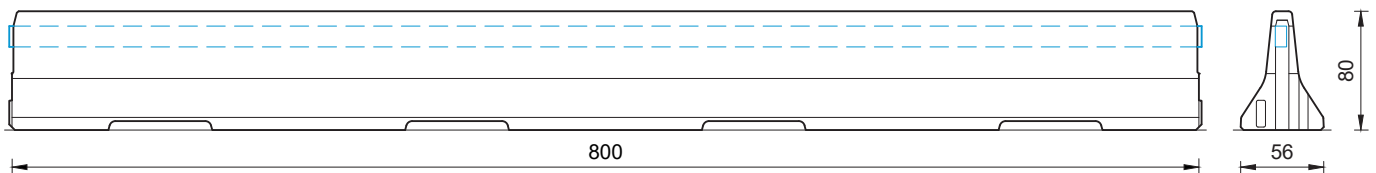


**Precast Concrete  
Vehicle Restraint System**

**Permanent System  
Free standing**

### Technical data

Containment level	H1
Working width	W4 ( $W_N \leq 1.3$ m)
Impact severity level	ASI B
Vehicle intrusion	VI4 ( $VI_N \leq 1.3$ m)
Installation	free standing on asphalt   concrete
Application	single-sided   double-sided
Minimum installation length	80 m (10 elements) + initial/end anchorage
Initial/end anchorage	required (according to anchor chart 39-10501): e.g. REBLOC 80H_4T   80H_7T or force closure
Dimensions L x W x H in cm	800 x 56 x 80 cm
Weight/element	approx. 4060 kg
Curve radius	$r \geq 225$ m, smaller radii on request
Coupling/exposed steel parts	fully integrated, exposed parts hot-dip galvanized
CE certification	✓



all dimensions in cm

### REBLOC GmbH

Ziegelofen-Straße 736 · 3571 Gars/Kamp · Austria  
Tel.: +43 (0) 2985 30528 2900  
Fax: +43 (0) 2985 30528 2901

office@rebloc.com | [www.rebloc.com](http://www.rebloc.com)