

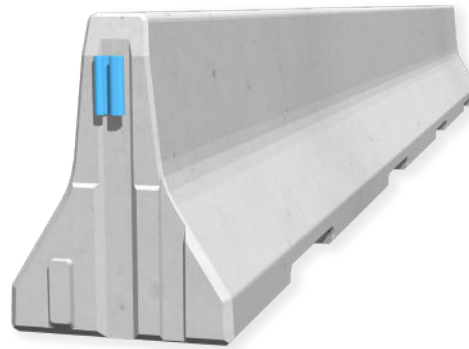
REBLOC 80X.1_8

Technical Datasheet

Precast Concrete
Vehicle Restraint System

Permanent System
Temporary System
Free standing

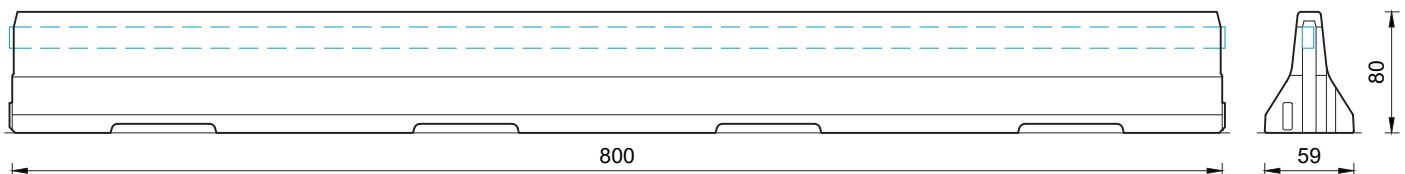
BEswitch



REBLOC 80X.1_8

Technical data

Containment level	H2	T3
Working width	W4 ($W_N \leq 1.3 \text{ m}$)	W2 ($W_N \leq 0.8 \text{ m}$)
Impact severity level	ASI B	ASI A
Vehicle intrusion	VI3 ($VI_N \leq 1.0 \text{ m}$)	VI1 ($VI_N \leq 0.6 \text{ m}$)
Installation	free standing on asphalt concrete	
Application	single-sided double-sided	
Minimum installation length	80 m (10 elements) + initial/end anchorage	
Initial/end anchorage	required (according to anchor chart 39-10501): e.g. REBLOC 80X_4T or force closure	not necessary, optional available
Dimensions L x W x H in cm	800 x 59 x 80 cm	
Weight/element	approx. 4630 kg	
Curve radius	$r \geq 235 \text{ m}$, smaller radii on request	
Coupling/exposed steel parts	fully integrated, exposed parts hot-dip galvanized	
CE certification	✓ (H2)	



all dimensions in cm

REBLOC GmbH

Ziegelofen-Straße 736 · 3571 Gars/Kamp · Austria
Tel.: +43 (0) 2985 30528 2900
Fax: +43 (0) 2985 30528 2901

office@rebloc.com | www.rebloc.com