

# THE EURONEAT™ SYSTEM

## THE NON-REDIRECTIVE ENERGY ABSORBING TERMINAL



### OVERVIEW

The EuroNEAT System is an end treatment for permanent and temporary installations. This Non-Redirective, Energy-Absorbing Terminal provides impact protection for speeds up to 80 km/h. It meets the EN 1317-3 criteria for non-redirective crash cushions. The EuroNEAT system's cartridge is lightweight, weighing only 147 kg. It is also compact, measuring less than 3 metres in length. The system can be installed in less than 15 minutes, without the use of special tools or heavy equipment.

The EuroNEAT System consists of a unique configuration of aluminum cells encased in an aluminum shell that withstands harsh weather and environmental conditions. The basic components of the system are:

- ▶ A one-piece, aluminum cartridge
- ▶ Steel backup and attachment hardware
- ▶ Steel transition panels

The system's unique design allows for easy attachment to the end of concrete barrier utilizing the barrier's existing pin and loop connection. The nose of the system can be equipped with a chevron sign and is reversible for unidirectional or bi-directional traffic. The cartridge features integrated caster wheels to aid repositioning and resetting.

### FEATURES AND BENEFITS

- ▶ Easy installation due to very few components - takes less than 15 minutes!
- ▶ Lightweight design means superior portability - weighs less than 150 kg.
- ▶ No special tools or heavy equipment required for installation.
- ▶ Integrated caster wheels aid in positioning and resetting.
- ▶ Meets EN 1317-3 criteria for non-redirective crash cushions at 80/1 level.
- ▶ Self-contained cartridge eliminates post-impact debris for easy clean-up and refurbishment.
- ▶ Anchors to portable barrier - ground anchorage not required.



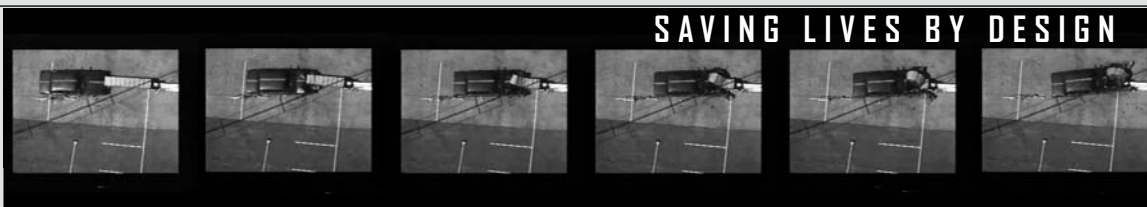
Available In Concrete Grey or Standard Safety Yellow



Durashell® Nose available to protect against nuisance impacts.



ENERGY ABSORPTION  
SYSTEMS, INC.



SAVING LIVES BY DESIGN

## EASY INSTALLATION & REMOVAL

The EuroNEAT System's lightweight design and few components make it ideal for temporary construction zone applications. The system does not require a concrete foundation as it does not have to be anchored to the ground. It is anchored to the concrete barrier using the barrier's own connection for attachment. The EuroNEAT System is installed in four easy steps.



Steel bracket and backup plates are attached to the loops at the end of the concrete barrier with a unique wedge and threaded rod connection.



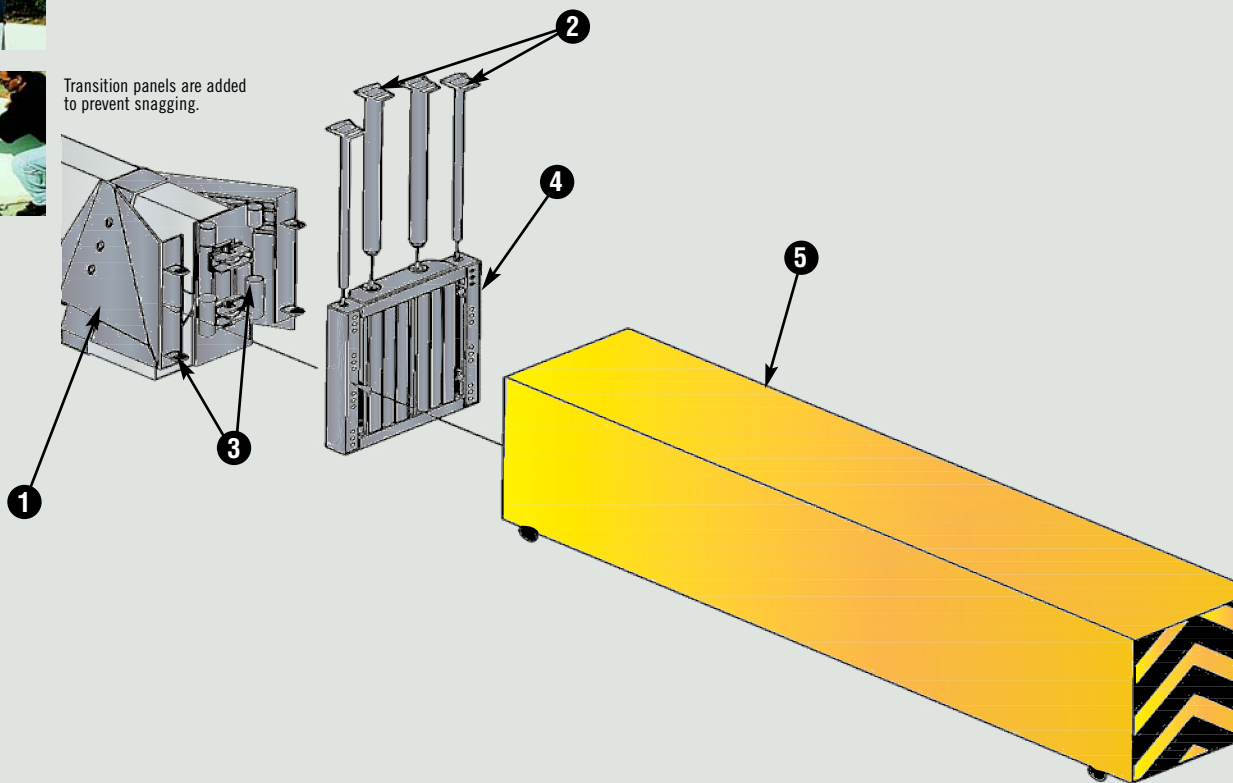
A steel collar is placed over the barrier end.



The aluminum cartridge is wheeled into position and steel pins are used to secure it.



Transition panels are added to prevent snagging.



## SPECIFICATIONS

Length	2965 mm
Width	570 mm
Height	813 mm
Weight	147 kg

- 1 TRANSITION PANELS
- 2 CONNECTING PINS
- 3 ATTACHMENT HARDWARE
- 4 BACKUP
- 5 CARTRIDGE

**Quixote**  
Transportation Safety

WWW.QUIXTRANS.COM



**ENERGY ABSORPTION**  
SYSTEMS, INC.

Crown House, Crown Street • Ipswich, IP1 3HS  
Tel: 44-1473-221-105 • Fax: 44-1473-221-106  
www.energyabsorption.com

SAVING LIVES BY DESIGN



Distributed By:

General specifications for the EuroNEAT System are subject to change without notice to reflect improvements and upgrades. Additional information is available in the Product Manual for this system. Contact Energy Absorption Systems for details.